



Sussex[®] Shutters
by
Lifetime Shutters & Blinds



LIFETIME

SHUTTERS & BLINDS

LEADER OF FINE WINDOW FURNITURE



a tradition of **quality**

*F*or over 30 years, the parent company of Lifetime® Shutters has provided function and fashion to homes around the world as the largest manufacturer of window coverings. We uphold this tradition with our versatile line of custom interior shutters. This fine window furniture is manufactured with many unique features that make it the most lasting and beautiful being crafted today.



Among the distinctive construction features that are signature elements of Sussex® Shutters are hand-selected quarter-sawn basswood reinforced engineered stiles Prescription Wood Conditioning®, mortise-and-tenon joinery, and a multi-step hand-finishing system. Some of these processes are enduring traditions of furniture craftsmanship while others are Lifetime® innovations designed to improve the long-term performance and appearance of our shutters.



invest wisely

FINE WINDOW FURNITURE for your windows



*F*or centuries shutters have been prized as fine window furniture and a testament to a homeowner's discerning style and sophistication. Shutters not only provide design, privacy, and light control options, they can also enhance the value of a home.

Like any home investment, only shutters of exceptional quality will provide long-term value and increase appreciation. This requires the finest materials, handcrafting processes, advanced technology and quality control systems.

Some shutter manufacturers take shortcuts that sacrifice quality and result in substandard products that won't add value to a home. These companies may be inexperienced, preoccupied with profit, or lack focus on shutters. Their products can suffer from limited manufacturing skill levels, deficient investment in machinery, and haphazard outsourcing of critical processes.



At Lifetime we feel the best shutter is created through meticulous control of each step in the manufacturing process of our shutters. Every stage: raw material sourcing, hand-crafting, labor-intensive sanding and finishing, and even packaging are carried out with one goal.

We strive to bring you matchless quality, durability and long-term value in your custom Lifetime shutter investment.



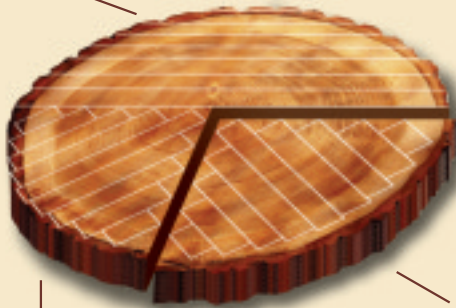
Quarter-sawn louvers

for **BEAUTY** & **EXTREME DURABILITY**

The finest heirloom furniture is made with quarter-sawn wood to ensure generations of durability, and so are all Sussex Shutter louvers. In quarter-sawing, the wood is harvested from tree logs in a way that makes it less susceptible to inherent cupping, twisting, and warping. Cuts are made parallel to the wood's medullary rays instead of across, which gives the wood remarkable strength and stability.

Though craftsmen recognize that quarter-sawn wood results in a superior shutter product, flat-sawn wood is widely substituted because it is much more plentiful and inexpensive. Quarter-sawing yields fewer usable boards and takes much longer to dry. These boards sell for up to 75% more than flat-sawn boards and are extremely prized.

flat sawn



quarter sawn



Quarter-sawn louvers
reveal *beautiful grain*

QUARTER-SAWN WOOD ALSO MAKES SUSSEX SHUTTERS EVEN MORE BEAUTIFUL. THE TIGHT GRAIN PATTERN SHOWCASES MORE DEPTH AND CHARACTER THAN FLAT-SAWN WOOD AND THE SMOOTH SURFACES RESULT IN AN EXCEPTIONALLY SMOOTH FINISH.

LOOK FOR THE DISTINCTIVE “DEPTH” PATTERN IN SUSSEX SHUTTERS. THIS DECORATIVE, WAVY PATTERN ENSURES THAT YOUR SHUTTERS WILL ENDURE BEAUTIFULLY FOR YEARS TO COME.



engineered-stiles

TO INHIBIT WOOD DEFORMATION, BONDING MULTIPLE LAYERS OF WOOD TOGETHER WITH PRESSURE, HEAT, AND A PROPRIETARY CHEMICAL FORMULATION CREATES THE CORE OF LIFETIME'S ENGINEERED REINFORCED STILE.

for stability

A well-crafted shutter closes solidly, does not have unsightly gaps, and stays that way year in and year out. To accomplish this, each part of the shutter must resist twisting, bowing, cupping and all other forms of instability inherent to natural wood. Compounding the challenge is the fact that many shutters require pieces of wood that must span over six feet.

Lifetime is the only shutter manufacturer to compensate for wood's tendency to deform, in this application, by using reinforced engineered wood stiles. We employ a costly and time-consuming procedure that bonds multiple layers of wood together with pressure, heat, and a proprietary chemical formulation. This imparts an intense level of durability to the cores of our stiles and results in a robust support system for your shutter panels.





tradition MEETS
technology





Prescription wood conditioning[®]

for REDUCED SHRINKING & SWELLING



The world is not a laboratory, but Lifetime's patented wood drying techniques, used on Sussex Shutters, originated in our R&D labs. We employ our Prescription Wood Conditioning technique to reduce post-installation shrinking and swelling of each Sussex Shutter.

Our wood conditioning specialists determine the humidity conditions of each customer's home location. The wood for the shutter order is dried to conditions emulating those of the final installation location. Drying to the proper environmental conditions ensures that shutters will close tightly, without gaps, and the result is a more solid and beautiful shutter for years to come.



WOOD SHRINKING AND SWELLING IS THE MAIN CAUSE OF POOR ALIGNMENT, LOOSE CLOSURE, AND GAPS IN INSTALLED SHUTTERS. OVER TIME, FLAWED SHUTTER CONSTRUCTION AND MANUFACTURING SHORTCUTS RESULT IN A DECLINE IN VALUE AND APPEARANCE.

A close-up photograph of a traditional mortise and tenon joint in light-colored wood. The joint is shown from a low angle, highlighting the smooth, rounded surfaces of the tenon and the corresponding mortise. The wood grain is clearly visible, and the lighting creates soft shadows that emphasize the three-dimensional structure of the joint. The text "traditional mortise" is overlaid in the upper right quadrant of the image.

traditional **m**ortise

mortise and tenon

joinery for **STRENGTH & STABILITY**

One of the hallmarks of fine wood crafting is employing the right joint for the job at hand. Proper wood joinery is critical to the prolonged quality of a shutter. At Lifetime, we recognize that the sheer and racking forces endured by shutters dictate the use of mortise and tenon joinery.

Traditionally used in demanding furniture and building construction, mortise and tenon joints are designed to withstand decades of shear and racking stress and ensure user and occupant safety. The joint is crafted out of a mortise cut through the wood and a hearty tenon, which fits into the mortise.



Some manufacturers use other joinery techniques, like dovetail joints, which are better suited to drawers and other lightweight applications. These joints are not intended to resist shear and racking forces. But at Lifetime, we design and handcraft your Sussex Shutters with ideal mortise and tenon joints.

hand-finishing

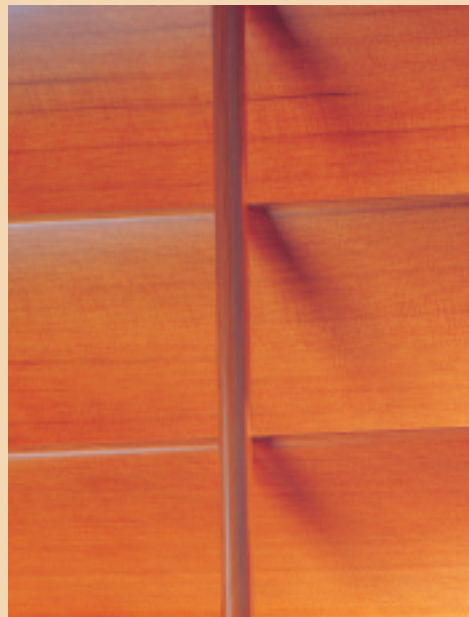
for RESILIENCE & BRILLIANCE



The secret to a handsome and durable shutter finish really isn't a secret at all. It takes multiple sequences of sanding with progressively finer sandpaper to open the pores of the wood for coating and smoothing the surfaces. Each layer is finely coated with fine-quality stain or paint. This labor-intensive process is the only way to achieve the translucent, deep finish of a Sussex Shutter.

Some manufacturers rely on semi-custom, pre-painted components. They may have a “cut-down” or “stock” program to reduce delivery times. These shutters may be partially pre-fabricated, many times from outsourced components, and fit together prior to installation. Consequently shortcuts are used, resulting in compromised shutter quality.

Other manufacturers endeavor to make a custom shutter yet fall short of Lifetime's quality because they use insufficient coating or fail to sand their shutters adequately. Every Sussex shutter is sanded and painted or stained numerous times, assuring a silken and lustrous finish.





LIFETIME SHUTTERS & BLINDS

promise

We build quality into all Lifetime products to ensure long-term performance and value. The result is a trouble-free shutter ownership experience. Contact your window coverings professional today for a consultation.







LIFETIME

SHUTTERS & BLINDS

LEADER OF FINE WINDOW FURNITURE

QUALITY

Quality

SERVICE

Service

SELECTION

Selection

VALUE

Value

Sussex[®] Shutters
by
Lifetime Shutters & Blinds

www.lifetimeshutters.co.uk office@lifetimeshutters.co.uk tel 020 8940 1418

Lifetime Shutters & Blinds

